

Tromba (B)

РАПСОДИЯ В СТИЛЕ БЛЮЗ

RHAPSODY IN BLUE

Обработка для трубы и фортепиано Т. Докшицера

Arranged for Trumpet and Piano by T. Dokshitser

Дж. ГЕРШВИН

G. GERSHWIN

(1899—1937)

Molto moderato $\text{♩} = 80$

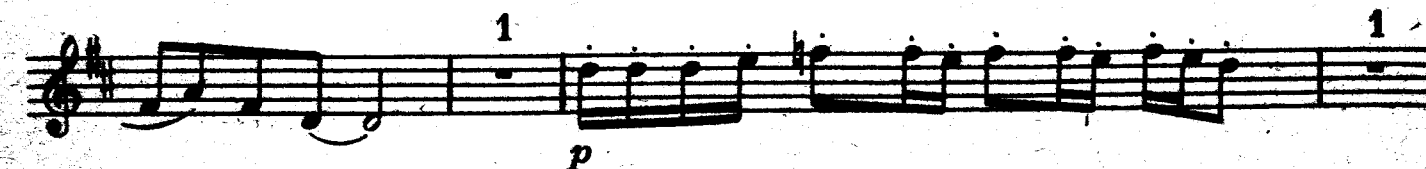
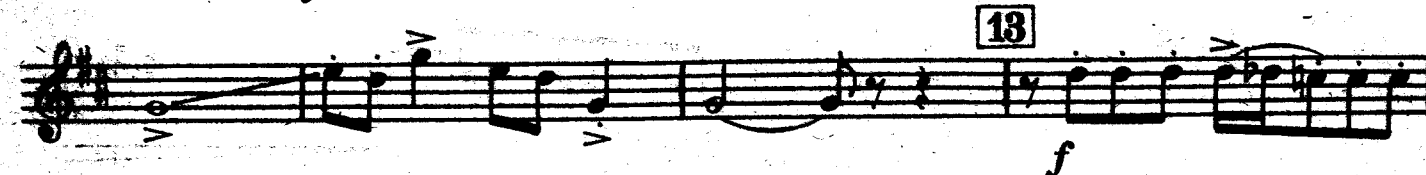
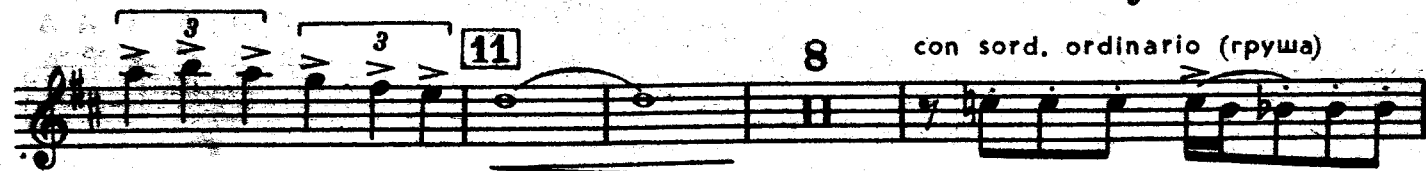
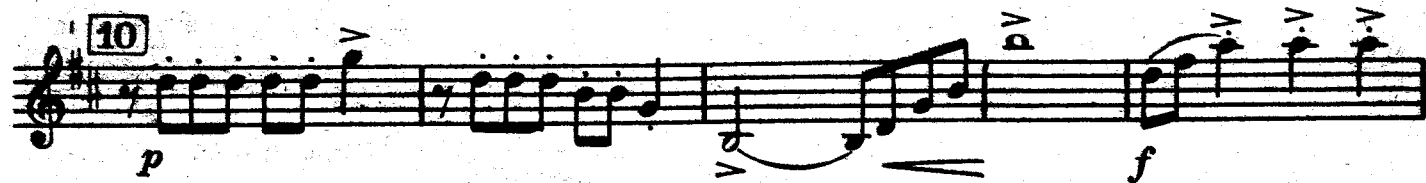
The musical score for Tromba (B) of Rhapsody in Blue is written on a single staff in B-flat major. It begins with a *Molto moderato* tempo of 80 beats per minute. The first section (measures 1-10) features a *tr* (trill) and a *gliss.* (glissando) leading into a *p* (piano) dynamic, which then *cresc.* (crescendos) to *mf* (mezzo-forte). The second section (measures 11-20) includes *tr* (trills) and *tr^b* (trills with a flat). The third section (measures 21-30) is marked *1 Più mosso* and *2 poco rit.* (poco ritardando). The fourth section (measures 31-40) is marked *2 a tempo*. The fifth section (measures 41-50) is marked *Moderato assai* and *[rit.]* (ritardando). The sixth section (measures 51-60) is marked *[a tempo]* and *3 energico, più mosso*. The seventh section (measures 61-70) is marked *4 tranquillo*. The eighth section (measures 71-80) is marked *più mosso*. The ninth section (measures 81-90) is marked *f deciso* (forte deciso). The tenth section (measures 91-100) is marked *5 P scherzando* and *6 poco rit.* (poco ritardando). The final section (measures 101-110) is marked *a tempo*.

Tromba (B)

pochissimo ratt.

Tromba (B)

23

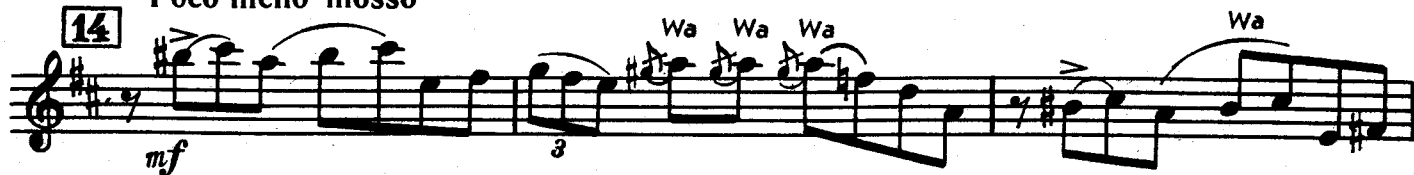


Tromba (B)

con sord. Wa-Wa (квакушка)



Poco meno mosso

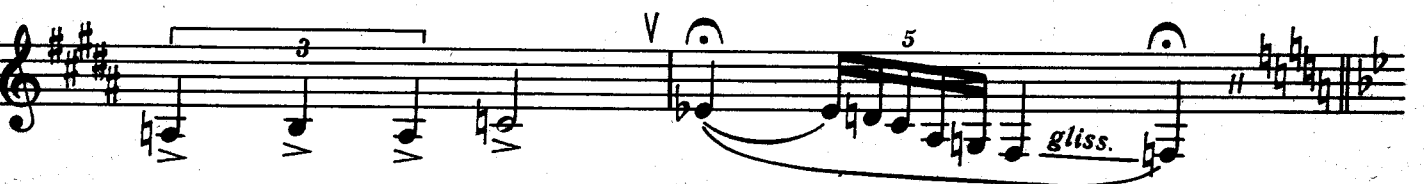
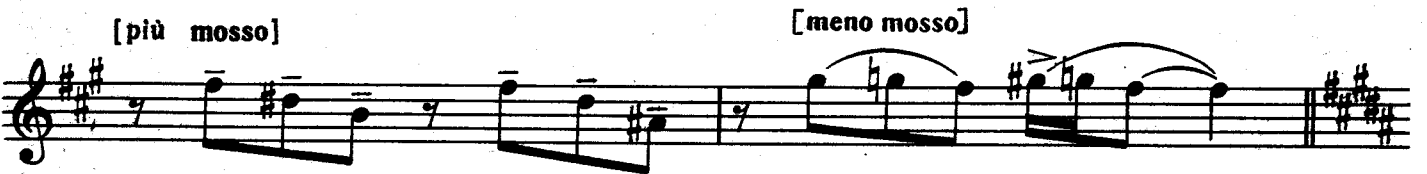


*) Каденция Т. Докшицера.

Tromba (B)

5

19 Tempo rubato



Tromba (B)

Moderato
 [20] 13 poco rit. [21] 1 [22] **Andantino moderato con espressione**
 con sord. (грибок) *p*

[più mosso] [a tempo] [rubato] *cresc.*

[a tempo] *mf*

poco rit. *pp* 3 3

[23] a tempo senza sord. 1 poco accel. *Pleggiere* [rubato] *cresc.*

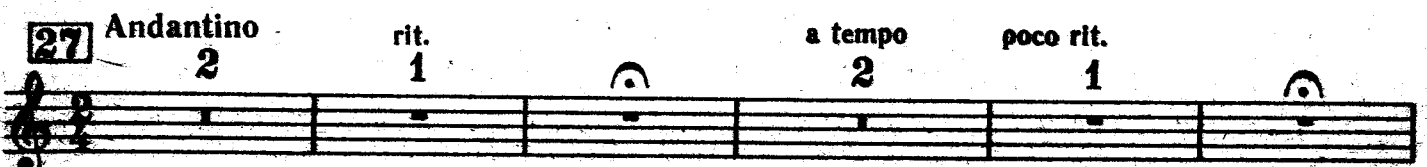
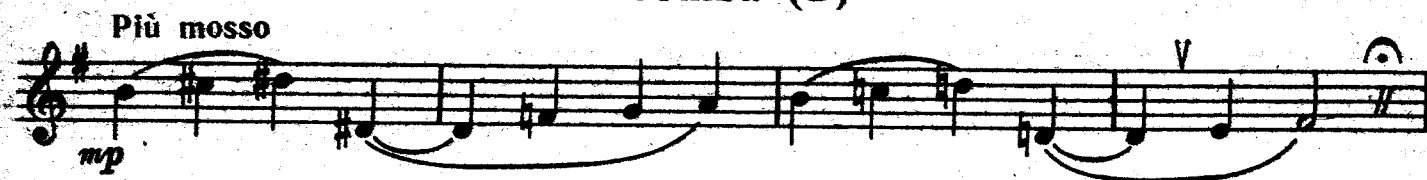
[a tempo] *dim.*

[poco accel.] 1 *mf* [rubato]

[a tempo] *ff* 3 3

Tromba (B)

7



Tromba (B)

[28] Agitato

poco a poco accel.

p *cresc.* *mf* *f* *ff*

cresc. *mf molto marcato* *poco rit.*

[29] Grandioso (meno mosso)

f *f* *f* *f*

[30] poco a poco rit.

f *f*

[31] Molto allargando

gliss. *sfz* *f*

molto rit. *ff*